

FIXING OF RADIATING CABLES
EFCO CLIC® Product catalogue



efco
.SWISS

smart fixing

Fixing of radiating cables



Radiating cable dimensions

Radiating cable	outer Ø mm	CLIC type	Range Ø mm	CLIC SKH type	Range Ø mm
3/8"	10,5	10	9.5–11.8		
1/2"	13,2	12	11.8–14.3		
1/2"	15,9	15	14.3–16.8	1/2"	13.7–16.2
5/8"	22	22	21.8–24.8		
7/8"	28,5	28	27.8–31.2	7/8"	26.5–28.7
1 1/4"	39,4	36	35.5–39.5	1 1/4"	37–39
1 5/8"	50	47	46.5–50.5	1 5/8"	44.2–48

CLIC TOP black 14-50 mm

- Material Polyamide PA12
- Colour black (RAL 9011)

EFCO-Art.-No	Description	Range mm	Metric norm	SU
A 88.960	CLIC TOP 15 sw	14.3 - 16.8	16	100
A 88.961	CLIC TOP 17 sw	16.8 - 19.5	-	100
A 88.962	CLIC TOP 20 sw	19.5 - 21.8	20	100
A 88.964	CLIC TOP 25 sw	24.8 - 27.8	25	50
A 88.965	CLIC TOP 28 sw	27.8 - 31.2	-	50
A 88.966	CLIC TOP 36 sw	35.5 - 39.5	-	50
A 88.967	CLIC TOP 47 sw	46.5 - 50.5	50	25



CLIC Spacer black

- Material Polyamide PA66 and PA6
- Colour black (RAL 9011)

EFCO-Art.-No	Description	h mm	LxW mm	SU
A 88.278	CLIC spacer 15 sw	15	30 x 20	100
A 88.279	CLIC spacer 25 sw	25	30 x 20	100
A 88.268	CLIC spacer 35 sw	35	24 x 20	100
A 88.774	CLIC spacer 45 sw	45	30 x 20	100
A 88.775	CLIC spacer 65 sw	65	30 x 20	50
A 88.269	CLIC spacer 85 sw	85	30 x 23	50



CLIC Spacer round black

- Material Polyamide PA66 and PA6
- Colour black (RAL 9011)

EFCO-Art.-No	Description	Ø 1 mm	Ø 2 mm	h mm	SU
A 88.274	CLIC spacer round 50 sw	30	60	50	100
A 88.287	CLIC spacer round 80 sw	30	60	80	350



Article tables

Background white

Standard quality

Background yellow

Stainless steel quality

DELTA Nylon plug

EFCO-Art.-No	Description	Ø Drill hole mm	Plug length mm	Drill hole depth mm	Ø Wood screw mm	Carton / box of pcs	SU
A 10.102	DELTA 6	6	29	35	3.5 - 5	1000 / 10,000	100

min. screw length = anchor length L + clamping force t fix + Ø screw



CLIC Round-head wood screw

- Head TX 25 with pressed-on washer, stainless steel A4
- Material stainless steel A4 (1.4404/AISI 316)

EFCO-Art.-No	Description	Ø mm	L mm	t fix mm	SU
A 62.182	PH 4,5x40 US A4	4.5	40	6	100
A 62.178	PH 4,5x50 US A4	4.5	50	16	100
A 62.184	PH 4,5x70 US A4	4.5	70	36	100
A 62.179	PH 4,5x80 US A4	4.5	80	46	100
A 62.180	PH 4,5x90 US A4	4.5	90	56	100
A 62.181	PH 4,5x110 US A4	4.5	110	76	100
A 62.185	PH 4,5x125 US A4	4.5	125	91	100
A 62.186	PH 4,5x135 US A4	4.5	135	101	100



CLIC Flange M6

- for mounting CLIC range 8-59
- Material zinc plated or stainless steel A4 (1.4404/AISI 316)

EFCO-Art.-No	Description	LxWxD mm	fits to	SU
A 88.130	CLIC flange M6 K VZP	20 x 10 x 2	CLIC 8-59	100
A 88.240	CLIC flange M6 KA4	20 x 10 x 2	CLIC 8-59	100



CLIC Flange M8

- for mounting CLIC range 32-59
- Material zinc plated or stainless steel A4 (1.4404/AISI 316)

EFCO-Art.-No	Description	LxWxD mm	fits to	SU
A 88.285	CLIC flange M8 K VZP	20 x 10 x 2	CLIC 32-59	100
A 88.286	CLIC flange M8 KA4	20 x 10 x 2	CLIC 32-59	100



TILCA Fire-resisting anchor

- Material zinc plated or stainless steel A4 (1.4404/AISI 316)

EFCO-Art.-No	Description	Ø Anchor mm	Usable length NL mm	Thread length mm	Drill bit	Ø Drill hole mm	Drill hole depth mm	SU
A 45.807	BSD 6/54 VZP	6	54	12	SDS 1	6	32	100
A 45.810	BSD 6/90 VZP	6	90	12	SDS 1	6	32	100
A 45.827	BSD 6/54 A4	6	54	12	SDS 1	6	32	100
A 45.830	BSD 6/90 A4	6	90	12	SDS 1	6	32	100
A 45.896	BSD 6/102/L A4	6	102	30	SDS 2	6	42	100



Mounting

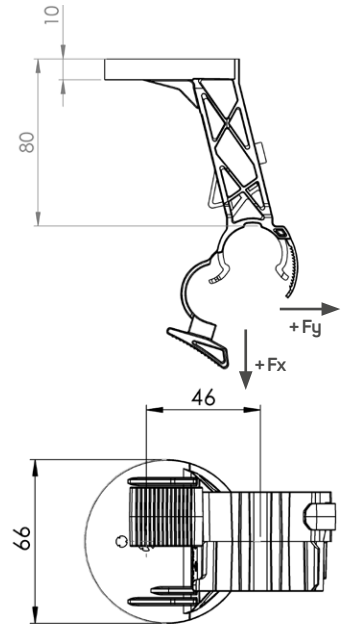


New innovative radiating cable clamp CLIC SKH



EFCO CLIC SKH

CLIC SKH Type	Wall distance mm	Base Ø mm	Base thickness mm	Safe working load in +Fy/+Fx directions, N
1/2"	80	66	10	300
7/8"	80	66	10	300
1 1/4"	80	66	10	300
1 5/8"	80	66	10	300



EFCO CLIC SKH black

- Material PK
- Colour black (RAL 9011)

EFCO-Art.-No	Description	Clamping range Ø mm	Size	SU
A 88.470	CLIC SKH 1/2"	13.7 - 16.2	1/2"	150
A 88.471	CLIC SKH 7/8"	26.5 - 28.7	7/8"	150
A 88.472	CLIC SKH 1 1/4"	37 - 39	1 1/4"	150
A 88.473	CLIC SKH 1 5/8"	44.2 - 48	1 5/8"	150



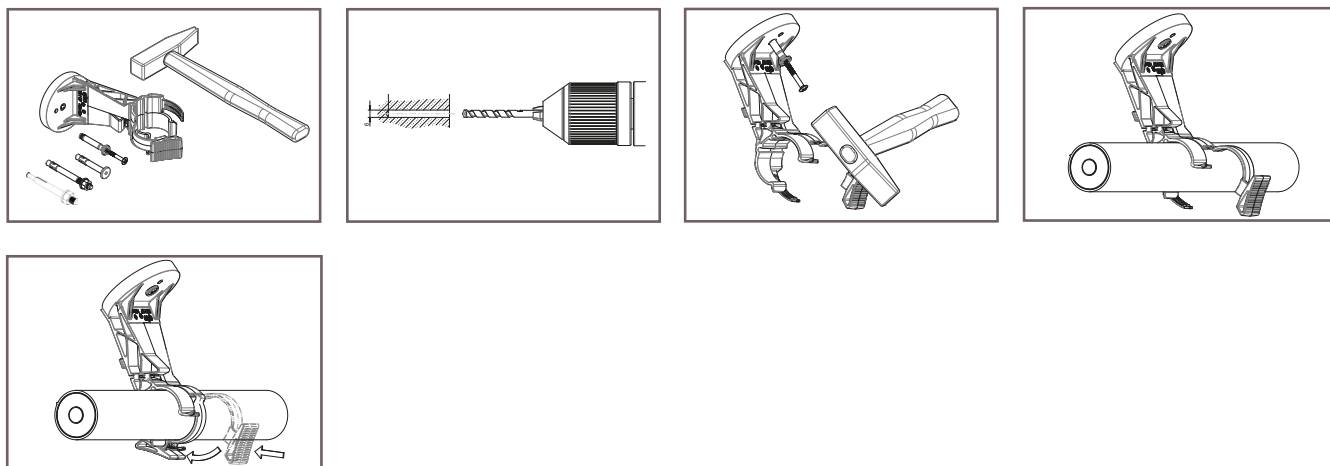
EFCO CLIC Fire protection insert

- Material 1.4401

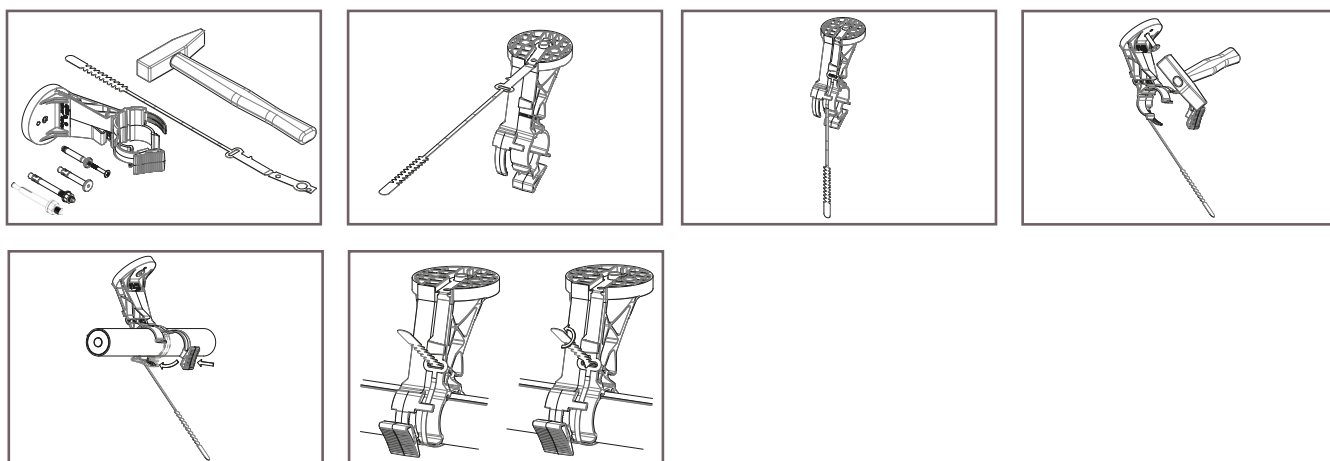
EFCO-Art.-No	Description	Insert to item (Art.-No)	Size	SU
A 88.480	CLIC FSB 1/2"	A88.470	1/2"	50
A 88.481	CLIC FSB 7/8"	A88.471	7/8"	50
A 88.482	CLIC FSB 1 1/4"	A88.472	1 1/4"	50
A 88.483	CLIC FSB 1 5/8"	A88.473	1 5/8"	50



Mounting



Mounting with fire protection insert



Installation on grid rack
in the tunnel – watch
the video: either on
www.clic-original.com
or using the QR code.

Fixing material for CLIC SKH radiating cable clamp



DELTA Nylon plug

EFCO-Art.-No	Description	Ø Drill hole mm	Plug length mm	Drillhole depth mm	Ø Wood screw mm	Carton / box of pcs	SU
A 10.102	DELTA 6	6	29	35	3.5 - 5	1000 / 10,000	100

min. screw length = anchor length L + clamping force t fix + Ø screw



CLIC Round-head wood screw

- Head TX 25 with pressed-on washer, stainless steel A4
- Material stainless steel A4 (1.4404/AISI 316)

EFCO-Art.-No	Description	Ø mm	L mm	t fix mm	SU
A 62.182	PH 4,5x40 US A4	4.5	40	6	100



TILCA Nail anchor N (fire resisting)

- Material zinc plated, stainless steel A4, HCR
- ETA 17/1004

EFCO-Art.-No	Description	Anchor Ø mm	Length mm	Ø Drill hole mm	Drill hole depth mm	Ø Through-hole mm	SU
A 44.960	TILCA N zinc plated	6	49	6	40	7	200
A 44.961	TILCA N ss A4	6	49	6	40	7	200
A 44.962	TILCA N HCR	6	49	6	40	7	200



TILCA Anchor (fire resisting)

- ETA 04/0026

EFCO-Art.-No	Description	Ø Anchor mm	Drill bit	Ø Drill hole mm	Drill hole depth mm	SU
A 45.904	KDM-L zinc plated	6	SDS2	6	42	100
A 45.905	KDM-L ss A4	6	SDS2	6	42	100



TILCA Drill bit

EFCO-Art.-No	Description	fits to	Drill shank	Drill hole depth mm	Ø Drill hole mm	SU
A 45.862	TILCA Drill bit	TILCA Anchor	SDS2	42	6	1



TILCA Setting tool SWM-SM 16

EFCO-Art.-No	Description	fits to	SU
A 45.872	SWM-SM 16	TILCA Anchor	1





EFCO Fixing Technology Ltd

Grabenstrasse 1 · 8606 Nänikon · Switzerland

Sales Switzerland

Phone +41 44 209 82 22 · Fax +41 44 201 22 75
sales@efco.swiss · www.efco.swiss

Sales international

Phone +41 44 209 82 03 · Fax +41 44 201 22 75
info@clic-original.com · www.clic-original.com

Service-Shop

Opening hours: Mon. to Thur. 7-12/13-17h · Fri. 7-12/13-16h